

FIG. 1

64-DIMENSIONAL  
SEMANTIC ATOM VECTOR

DIMENSION 1 <b>X<sub>1</sub></b>
DIMENSION 2 <b>X<sub>2</sub></b>
⋮
DIMENSION 4 <b>X<sub>4</sub></b>
DIMENSION 6 <b>X<sub>6</sub></b>
DIMENSION 64 <b>X<sub>4</sub></b>

FIG. 2

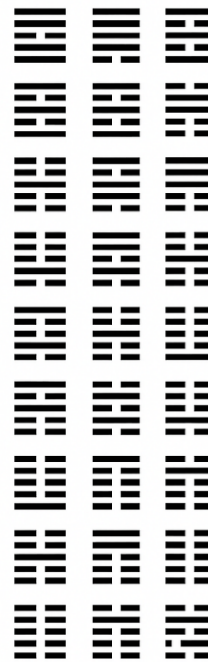
64 DIMENSIONAL  
SEMANTIC FRACTAL AL  
TOPOLOGICAL MATRIX


64 HEXAGRAMSS OF THE  
I CHING

FIG. 3

64-DIMENSIONAL  
SEMANTIC FRACTAL  
TOPOLOGICAL MATRIX

0	0	1	0	0	0	1
1	0	0	0	0	1	0
0	1	0	1	1	0	0
0	0	1	0	0	0	1
0	0	0	1	0	1	0
1	0	0	0	1	0	0
0	1	0	0	0	0	1
0	0	1	0	0	1	1
1	0	0	1	1	0	0
0	1	0	0	0	0	1
0	0	1	1	0	0	1



64 Chinese  
64 hexagrams

FIG. 4



FIG. 5

SEMANTIC EXECUTION GRAPH

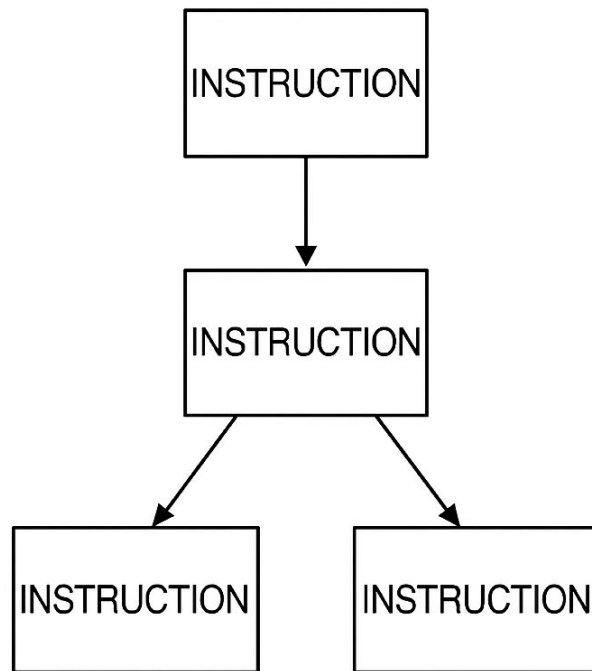


FIG. 6

MULTI-AGENT SEMANTIC  
EXECUTION ENVIRONMENT

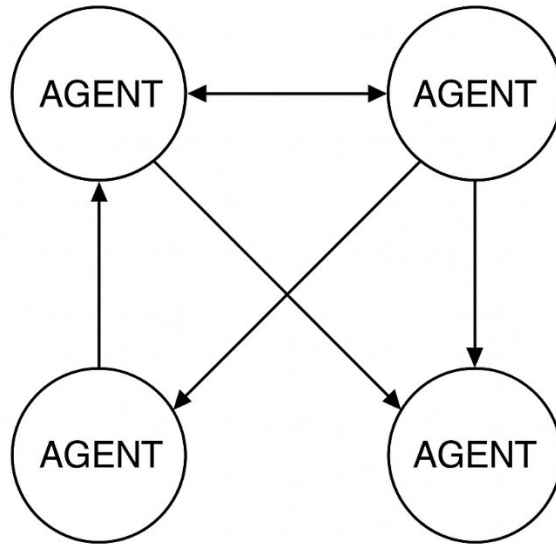


FIG. 7

HARDWARE-MAPPED  
EMBODIMENT OF SEMANTIC  
INSTRUCTION SET

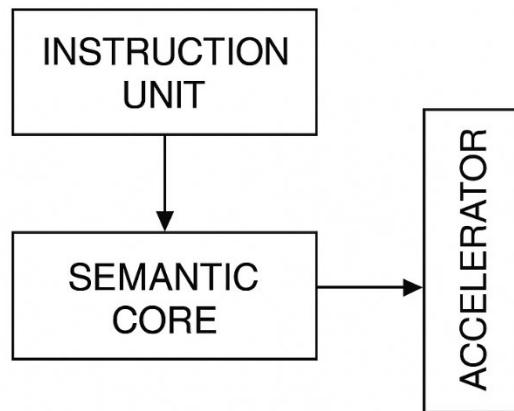


FIG. 8

# SEMANTIC AUDIT AND VERIFICATION WORKFLOW

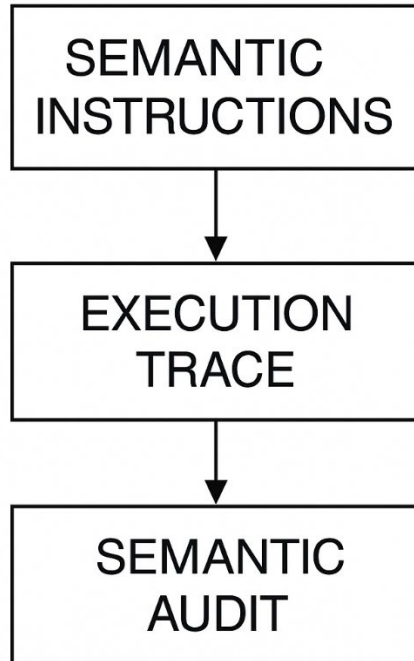


FIG. 9

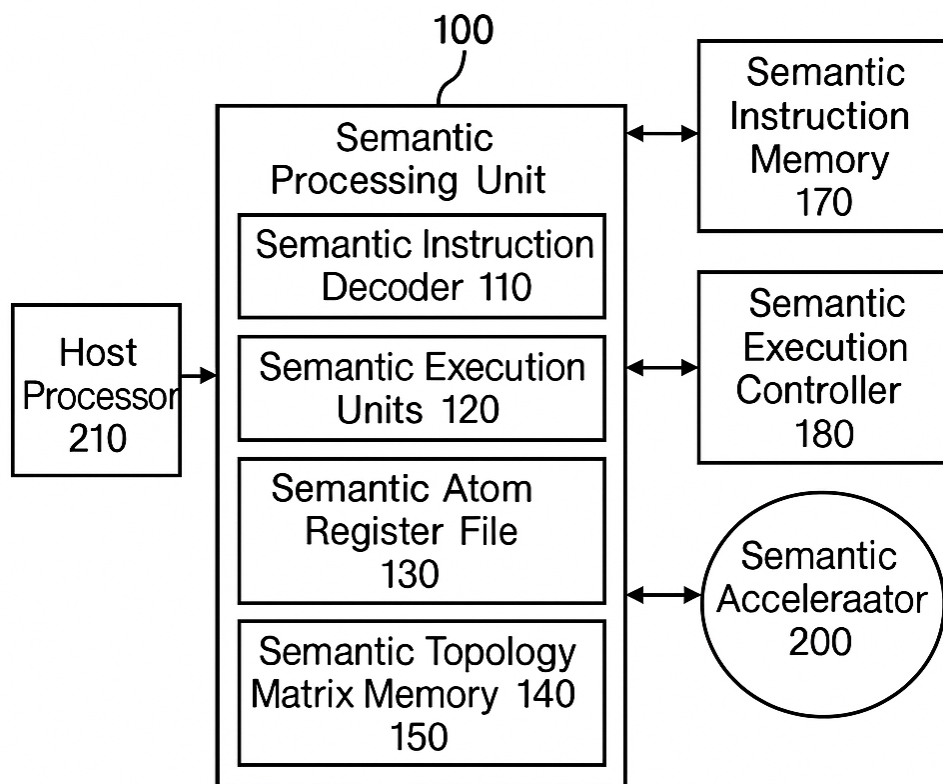


FIG. 10

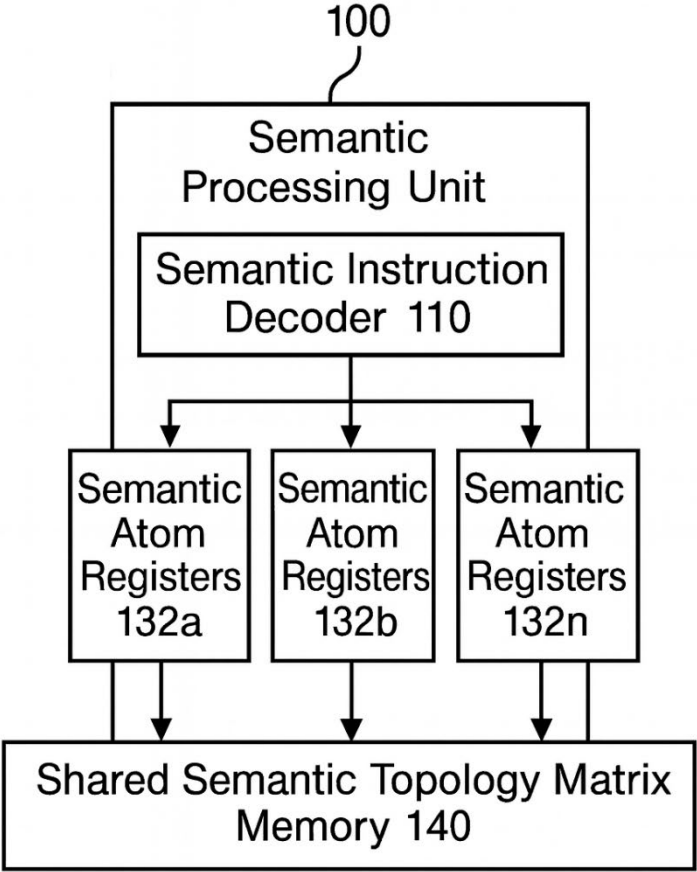
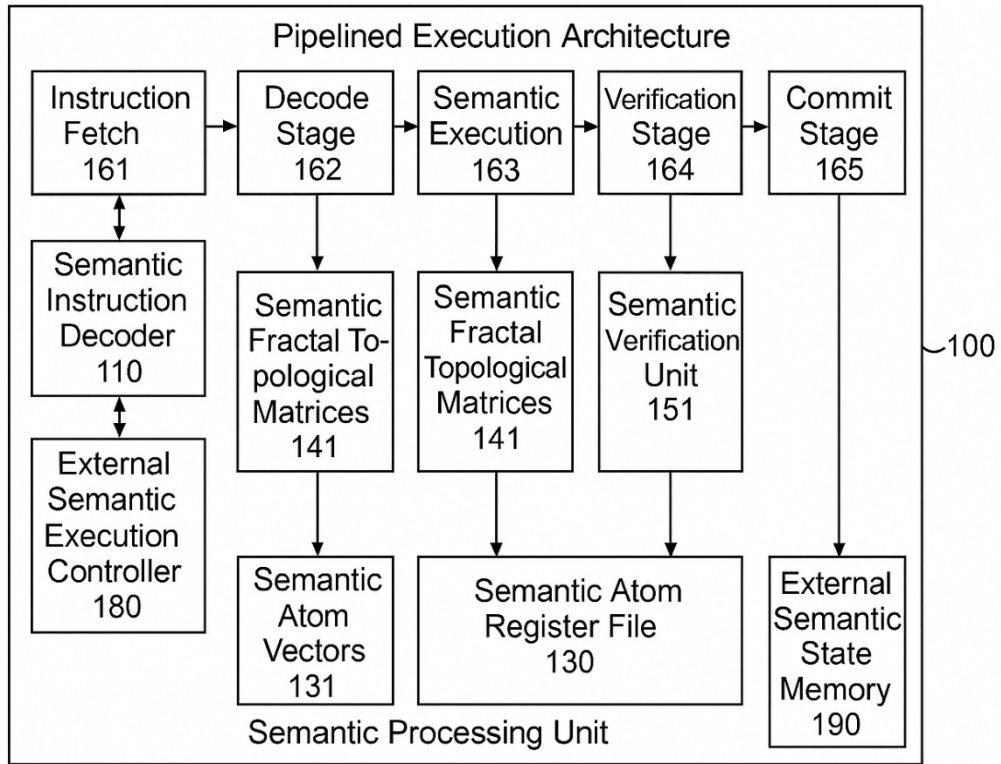
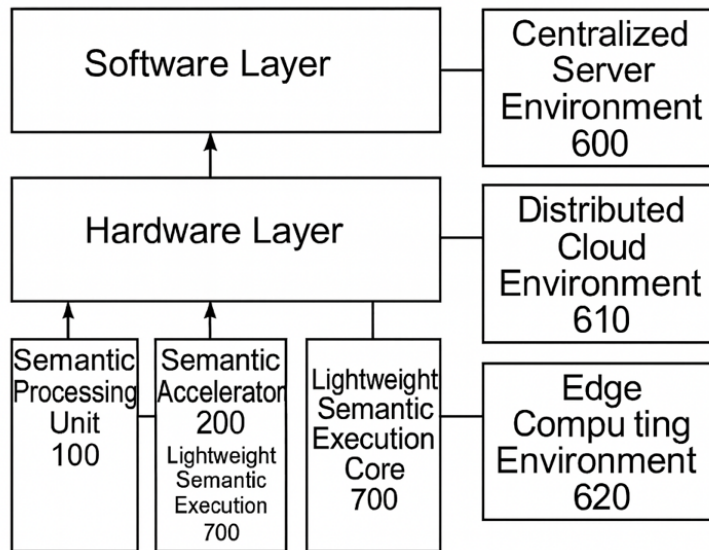


FIG. 11



**FIG. 12**



**FIG. 13**

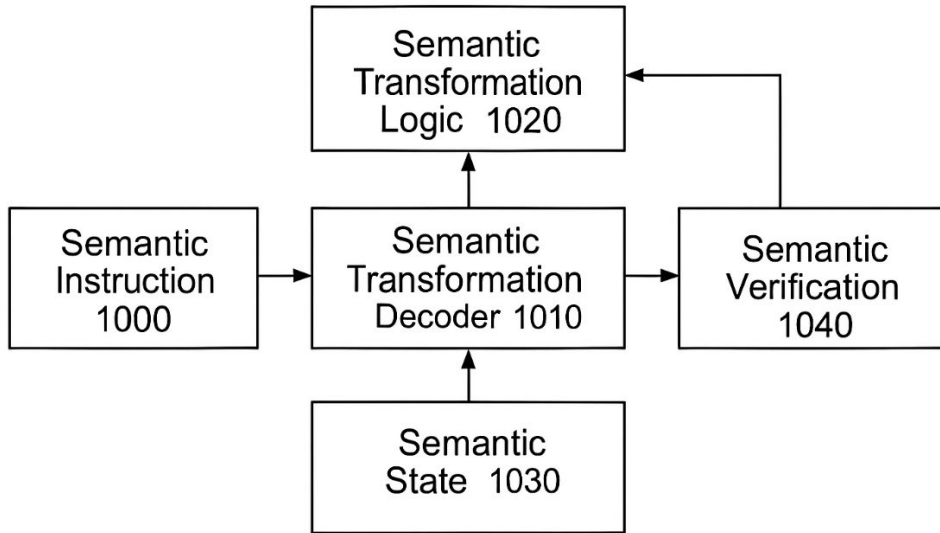


FIG. 14